

LAKE CARMİ ASSOCIATION NEWS

Brought to you by the Lake Carmi Camper's Association, Inc., & other fine sponsors

In Loving Memory of Our Late Editor & Dear Friend, Larry Myott



Carmi Water Quality Work Continues as Summer Ends

Usually, the last article of the season is a no brainer. I re-cap the highlights of the season and set forth an agenda for the next year. I can do that, but the overwhelming impulse I have is to talk about the water quality this year. It has been a constant challenge for me and others.

President's Report



By Peter Benevento, LCCA President

It has been a huge disappointment and persistent source of frustration to rise in the morning only be greeted by green water. You can't take that

swim. You dare not let your grandkids in the water. The dog is also on a leash, as the water can be bad for them too.

Bottom line: You can't use your backyard! How bad is that?!

I hate to be negative, but I must admit that it feels good to get that all out on the table. I'm sure there are others who share my sentiments, as many of you have lived with the condition of the lake all season. To coin a phrase from the 60s, the water quality this season has been a real bummer.

We had high hopes that the aeration system would keep the algae at bay. Except for some glitches at the beginning of the season, the system has worked flawlessly. Nevertheless, the algae blooms persisted.

It is thought that the system possibly can't deal with the degree of sediment at the lake bottom. There is too much legacy phosphorous to treat, and the system cannot produce enough oxygen to keep the phosphorous bound to the sediment. When there is insufficient oxygen, the phosphorous releases from the sediment into the water column and fuels the algae bloom.



TRAFFIC LIGHTS ON LAKE CARMİ

Kayakers cross Lake Carmi on a quiet August day.

Photograph by Claudia Elliot

So what now? The present thought is that aeration alone may not be the answer. Discussions have ensued about treating the lake with alum. Alum binds or traps the sediment at the bottom of the lake so that phosphorous cannot be released into the water column. It has been successfully used at Ticklenaked Pond in Caledonia County on the western border of Vermont.

Alum is not cheap. The estimate for an application to Lake Carmi ranges to as high as seven figures. So, before any

decision is made to apply alum, its success must be a reasonable certainty.

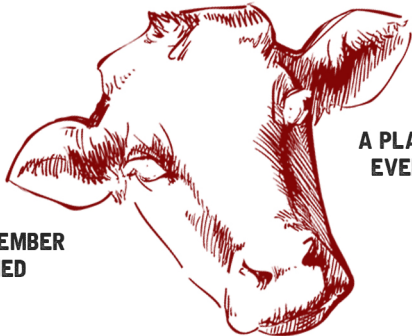
What's next? The success of alum depends significantly on the degree of erosion and sediment that enter the lake. Alum has no effect on phosphorous entering the lake after the treatment. This phosphorous would be available to fuel an algae bloom. Therefore, it is crucial we continue to work in the watershed to reduce erosion. The Franklin Watershed

See REPORT, pg. 5

THE ABBEY

THE FOOD IS GREAT, THE BEERS ARE COLD,
AND FRIENDS ARE PLENTY

OPEN 11:30AM-10PM WED-SUN
THURS - KARAOKE | FRIDAY - LIVE MUSIC



A PLACE FOR
EVERYONE

LCCA MEMBER
OWNED

**JOIN US IN THE PUB OR
OUTDOORS ON THE BACK 40**

LESS THAN 10 MINUTES AWAY! | (802) 933 - 2223
6212 VT ROUTE 105 ENOSBURG FALLS, VT 05450 | WWW.THEABBREYRESTAURANT.NET

Busy Month Includes Hosting Special Guests

Hello everyone.

I hope you all enjoyed your summer as much as possible! It is always sad to see another summer season coming to an end, and while this season may have brought some disappointments, we remain hopeful for the future.



Franklin Watershed Update

By Julia
Crocker,
Coordinator,
Franklin
Watershed
Committee

This month we had two exciting meetings at Lake Carmi. The first was on Aug. 18 with Agency of Natural Resources Secretary Julie Moore and Franklin County Sen. Randy Brock. Diane and David Larose were gracious enough to lead the conversation and take us on a boat ride around the lake. The next meeting occurred on Aug. 30 with two representatives from Sen. Bernie

Sanders' office. This time our boat captain was John Costa, with the conversation being led by Rob Evans. At both meetings, we discussed how hard we have worked within the watershed to reduce our phosphorus loads entering the lake. These conversations were vital to tackling the ongoing cyanobacteria problem. We asked that our visitors keep Lake Carmi at the forefront of their water quality discussions. Our guests listened diligently and gave us hope for next steps in improving our lake's water quality.

One bit of news we shared with our guests is that, based on the Total Maximum Daily Load (TMDL) models, the DEC has reported that Lake Carmi has successfully met our load reduction goals! We also had our best year yet with the aeration system running at full capacity. However, we still see significant blooms throughout the lake, and we are losing the UVM data collection buoy.

Overall, it has been a busy summer for the Franklin Watershed Committee (FWC). We collected nine sets of tributary samples to track changes in phosphorus levels. The data showed a reduction in phosphorus from previous years. We are compiling this data and uploading it to our website, so stay tuned! Our Best Management Practices (BMP) project with the Franklin County Natural Resources Conservation District (FCNRCD) has been going extremely well. So far we have performed 11 site visits and LakeWise evaluations, and we have awarded two LakeWise certifications! It is not too late to schedule a site visit of your own to learn how to make your shoreline more lake-friendly. Contact info@franklincountynrcd.org if you are interested.

Later this month, we will be walking the tributaries to scout areas of significant erosion that may benefit from implementing a BMP. These stream walks will be part of the BMP project with the FCNRCD. Finally, we are diligently submitting reports of cyanobacteria blooms to the Lake Champlain Committee, as well as keeping a photo journal on the FWC website. Thank you so much to everyone who has submitted photos. They are vital in our efforts to log the extent and severity of blooms.

The FWC would like to remind you all that we offer a \$75 dollar rebate for having your septic system pumped and a \$25 rebate for portalet rentals. If you have had your septic system pumped or rented a portalet, you may send a copy of your receipt, stating that your camp had a pump-out, to the Franklin Watershed Committee, P.O. Box 79, Franklin, VT 05457. Be sure to include an address where the rebate check can be mailed!

With summer ending, I want to say that I have thoroughly enjoyed my first season as Watershed Coordinator. I am so happy to have met some of you and to be giving back to this wonderful lake that I have grown up loving. I hope to see you next summer!

Pam Deuso



**Your Lake Carmi
Tupperware
Consultant**

friend.my.tupperware.com
(802) 752-0635

Tupperware®

Lake It Easy Winners Announced

It was recently brought to my attention that not everyone saw our bulk email announcing the winners of the Lake it Easy lighting contest in July and did not list the winners in earlier editions of this newsletter. We apologize.

The Lake it Easy Celebrate Lake Carmi Judging Committee set about its appointed rounds in July to observe all who felt the spirit and lit their camps to enhance the festive 4th of July week. The committee is extremely impressed with the efforts put forth by camp owners and commends them all. Even the island participated.

The winners are:

Most Inviting: Underwood Camp at 647 Wescott Shore

Most Creative: Johnson Camp at 47 Black Woods Rd.

Most Patriotic: Lang Camp at 773 Wescott Shore

Honorable Mention: Larose Camp at 244 Vic's Crossing,
Lumnah Camp at 213 Wescott Shore

Certificates will be awarded to the winners and presented at the LCCA Annual Meeting on Thursday, Sept. 15.

Congratulations to all the winners, and thanks again to all who participated.

Pete Benevento
President, LCCA

Closing Camp

By Suzi Hull-Casavant

The days are shorter, yet the weather remains warm. I want to make this time last as long as I can.

I cleaned out the stove pipe the other day in anticipation of cozy, nighttime fires in the cabin and crisp days with blazing colors circling the lake.

It will be a bittersweet. Camp closing always is, as I wish it was just a little more weathertight to spend a winter night down here, waking up to a blanket of beautiful snow. But that is not the case. It will amount to a few visits in the winter, making sure a pine tree didn't land on the camp, and I'll possibly take a walk along the frozen shoreline on a sunny, winter day.

This camp is still my happy place, still a place I go to in my mind when the weather is gray and the mood dampens.

One thing that joins us all together is the place in our mind we all go that's called called Lake Carmi.



Shop Owner: Jennifer Besette

Florist and Gift Shop
Franklin County Delivery
LCCA Member Owned

Summer Hours
Monday & Wednesday 9-3pm
Tuesday, Thursday & Friday 9-5pm
Saturday 9-12pm

63 Grand Ave, Swanton, VT 05488 | (802) 868-7226

Learn more today! www.jennysbarnvt.com

Jenny's Barn
Franklin, Vermont
Wedding Venue
Now booking 2023!

Versatility runs in the family.

BX Series 16.6-24.8 HP

Kubota Together we do more.[®]

Call today to schedule a demo of the versatile BX Series sub-compact tractor. Part of our under 100 HP tractor line-up rated #1 for reliability.*

- Variety of available attachments
- Easy-to-use hydrostatic transmission
- Swift-Tach Loader is easy to install and remove
- ROPS height fits easily in standard size garages

MIDDLEBURY | ST. ALBANS | DERBY | BERLIN | ESSEX
champlainvalleyequipment.com • 802-388-4951

KubotaUSA.com
*2020 Progressive Farmer Reader Insights Award for Fewest Reported Problems Overall in the category of Small Tractor (Under 100 Horse Power). Award based on 2020 Progressive Farmer Readers Insights Tractors Study. © Kubota Tractor Corporation, 2021. This material is for descriptive purposes only. Kubota disclaims all representations and warranties, express or implied, or any liability from the use of this material. For complete warranty, safety and product information, consult your local Kubota dealer. For the complete disclaimer, go to KubotaUSA.com disclaimers and see the posted disclaimer.



Working Dog Septic Service



- Septic Tank Pumping
- Sewer Jetting & Thawing
- Port-O-Potties
- Camera Inspection
- Pump Station Service
- Tank Inspections
- Over 30 Years Experience

1-888-949-9969

Toll Free

Cell: 802-343-1657 • JR Young



REPORT from pg. 1

Committee (FWC) is working with the Franklin County Natural Resources Conservation District (FCNRC) on a project grant that includes stream walks in the watershed. The stream walks will target the main tributaries to the lake to evaluate where remediation may be appropriate to reduce erosion. This will have a direct impact on reducing the phosphorous loads thereby enhancing the possibility of an Alum treatment.

The FWC and FCNRC are also working on reducing phosphorous loading through the Lakewise Program. They are currently visiting camps, making recommendations on how lake shore owners can limit erosion on their property. Please contact FWC Coordinator Julia Crocker at jcrocker5@une.edu to schedule a Lakewise visit. Remember, every effort, no matter how big or small, is needed to help the lake.

We will continue to work with the Department of Environmental Conservation (DEC) on the possible use of alum, as well as other solutions. DEC has been a very helpful and responsive partner in this long journey. DEC hosts the next quarterly TMDL Coordination meeting virtually on Thursday, Oct. 6 at 4 p.m. Please contact me at president@lakecarmivt.com for the link to the meeting. Potential strategies for the lake will be discussed, as well as the opportunity to ask pertinent questions. I urge you to attend.

We have also been busy in our outreach efforts. Over the past two months we have taken ANR Secretary Julie Moore and Franklin County Senator Randy Brock on a lake tour. Both have pledged their support. We have also toured the lake with representatives from Sen. Bernie Sanders' office, who also responded positively. The offices of Sen. Patrick Leahy and Congressman Peter Welch

were contacted too. A reporter from WPTZ Channel 5 was also given a lake tour. All of this was done to draw attention to our cause. We need to continue to contact and dialogue with those in our state who help us achieve our goals. Most importantly, we need to ensure state funding stays in place for our lake. Please contact your elected representatives and urge them to continue to support Lake Carmi.

Alum may or may not be our next step. Regardless of the path, the LCCA will continue to work throughout the year with the FWC and our other partners. We will continue to keep you updated throughout the winter through our website, lakecarmivt.com, and our extensive bulk email listing. If you are not receiving our bulk emails but wish to do so, please send your email address to me at president@lakecarmivt.com.

Now to the highlights. Your LCCA Board of Directors presented some familiar and new events this year. We sponsored the Lake It Easy-themed Light up Lake Carmi; we re-introduced the Ice Out Contest and held our third concert on the Town Green. We also introduced two new events which we hope to hold again. The first was a tour of the lake and lunch we hosted for seniors at Franklin Homestead. The second was a golf tournament, which was significant fundraiser for the Lake Carmi Community Foundation (LCCF). I would like to publicly thank our LCCA Directors and LCCA members that worked to make all these events, old and new, such a success.

I would also like to thank Dave Bennion and the Franklin

Selectboard for all their help and cooperation throughout the season. They too are our partners. They are involved in all aspects of helping our lake. They were also instrumental in establishing the "Lake Carmi" sign at the north shore boat launch. For anyone familiar with the sign regulations in Vermont, this was a huge accomplishment.

I apologize for spending more words on water quality than the lighter side of living on the lake, but current circumstances dictate it. We will continue this trend as long as necessary. Albeit difficult, we must remember our problems were long in the making and will take time to remedy. We are, however, on the right path. We may hit detours along the way, but we are heading in the right direction. We are much farther down the road than a few years ago.

So what now? Stay engaged and stay supportive. Get involved. The LCCA, FWC, and the LCCF all need your help in achieving their respective missions. Together we can achieve our water quality goals sooner than later. How good is that!



Avery's Snowplowing, Lawncare and Excavating

Megan Stanley: 802-363-6892 Avery Stanley: 802-309-5203

Family Owned and Operated

P.O. Box 67
Montgomery, VT 05470

Vermont Maple Gift Shoppe

Gifts, Gift Baskets
Maple Syrup & Maple Products
Collectables, Vintage & Antiques

Pam Greene & Dave Bennion

5320 Main Street
Franklin, Vermont, USA 05457
E-mail: info@vermontmaplegifts.com www.vermontmaplegifts.com

Phone: 802-285-6523
Fax: (208) 379-2838

Latin American
Mexican
Vegetarian

Garcia's
Bistro

Dine In
Take Out

383 Main St., Enosburg Falls, VT
(802) 933-3149



EGO
POWER SYSTEM

EGO TOOLS HELP YOU POWER THROUGH ANY JOB

In every season, you can count on EGO power, innovation and performance to help you tackle all your outdoor tasks.



Green's Ace Hardware
6 Railroad St
Enosburg Falls, VT 05450
(802) 933-7500

\$10 off

on your next purchase of \$30
or more at Green's Ace Hardware

* Terms and Exclusions: Coupon valid at store named on coupon for one transaction only. Valid through September 30, 2022. Not valid on sale, discounted and clearance priced merchandise, rental, in-store services, Ace gift cards, fuel, previously purchased merchandise, power tools, on the following branded products: Weber®, Nest, Stihl®, YETI®, Traeger®, Big Green Egg®, Joanna Gaines and other items that each participating store may designate, or in conjunction with any other coupon, excluding Rewards. Any purchase minimum is calculated before applying Reward redemption and before tax. Coupon may not be sold or transferred. Void if photocopied or duplicated. No cash value. Coupon cannot be replaced if merchandise is returned. Additional exclusions may apply. See store for details.

DP126040



An Appeal to Officials Regarding Carmi Water Quality

The following letter was written by Franklin Watershed Committee President and LCCA Vice President Rob Evans. It was sent on Sept. 7, 2022, to ANR Secretary Julie Moore, DEC Commissioner John Beling, the Clean Water Board and the Franklin County Elected Delegation. The letter outlines our primary water quality efforts over the last four years and requests funding for the future. We ask that all in the Lake Carmi community contact our State and Local representatives requesting that Lake Carmi continue to receive the necessary level of funding for water quality efforts.

Thank you.

Pete Benevento, Pres. LCC

As we move into fall and I look out over Lake Carmi, I am struck by what a special place this lake really is. However, our continuing clean water challenges remind us daily of the work that still needs to be done. Late in June, we once again experienced an extensive algae bloom that has lasted now for months. Our beaches have been closed, our shorelines have been choked with thick blue green algae, and campers and community members have been extremely frustrated by their inability to enjoy all the lake has to offer. In fact, many camp owners left the lake early, some renters of camps cancelled their reservations due to the poor water quality, and I'm sure the town has felt the financial impacts due to the lake's poor water quality. While we understand that our situation is not unique to Vermont's lakes and ponds, we are the only lake designated as a "Lake in Crisis" in the state, and we simply must do better to address this crisis and prevent a situation where month-long blooms on Lake Carmi become the norm.

For four years now, the aeration system that was deployed in the lake has not delivered the outcomes we had all hoped it would. Flaws in the design of the system and frustrating maintenance issues have kept us from experiencing a fully functioning system throughout an entire summer since the system was installed. For the first three years of operation, and despite the system working in an uninterrupted manner in 2022, the lake's water quality and frequency and intensity of blooms are as bad as ever.

Additionally, the system's outages in 2020 and 2021, followed by repair and redeployment, appears to have led to increased internal phosphorus loading in the lake, as evidenced by abnormally high summer mean total phosphorus concentrations for those two years. Finally, the data being collected by the monitoring buoy currently deployed in the middle of the lake leads us to believe the aeration system is not providing enough relief for our lake and our algae blooms seem to be as bad as they ever were.

While we recognize and appreciate the significant financial and personal resources that have been committed to enhancing water quality at Lake Carmi, we fear that if more is not done, we will lose our decades-long battle, and Lake Carmi will continue on its downward spiral. In an effort to support our work, we are asking for the following.

1. Funding to conduct a diagnostic feasibility study for a possible alum treatment at

Lake Carmi.

2. Funding be reserved in Vermont's Clean Water Initiative Program (CWIP) to support an alum treatment for Lake Carmi if the above feasibility study determines this is an appropriate strategy. (approximately 1-2 million)
3. Increase from \$50,000.00 to \$150,000.00 the annual Lake in Crisis funding to support the electrical costs, operation/maintenance of the aeration system and the work of our Franklin Watershed Coordinator in 2023 (despite the aeration system's challenges, data suggests that a functioning system may be better than no system, and we would like to continue to operate the system until a determination on the alum treatment is made)
4. Continue to support the deployment of the data collection buoy on Lake Carmi in 2023 while the aeration system is deployed at the lake. (approximately \$50,000.00)
5. Continue to fund UVM Extension's work in the watershed, whose assistance has been instrumental in helping the

See APPEAL, pg. 16

BEST CHOICE
PEST CONTROL
 Offering solutions to your pest problem
James Bushey
 Owner - Operator
 (802) 782-9708
 E-Mail: bushey45@franklinvt.net

The Quincy Hotel
 57 Depot St., Enosburg Falls 933-8300
 Daily & Weekly Rates

MARK E. LARIVEE
 PLUMBING, HEATING & ELECTRICAL
When Quality Matters
 RENOVATIONS, REPAIRS, NEW CONSTRUCTION
 285-6808 OR 933-2509
 mlarivee82@gmail.com
 FULLY LICENSED AND INSURED

ON A LIMB



TREE SERVICE


Tree Removal ● Tree Trimming
 Stump Grinding ● Chipping
 ● Bucket Truck Services ●

Jerry Parent, Owner Operator
 Home: (802) 933-2376
 Cell: (802) 782-2678
 Free Estimates ● Fully Insured

A Big THANK YOU To Our Advertisers

As we go to press for this, our last edition of the 2022 LCCA newsletter, we acknowledge the businesses who supported us through advertising this year (listed alphabetically below). Our printing expenses more than doubled this year due to increased paper costs, and without advertiser support, we might have had only a digital version available. Please take a look at who supported us, and then support them in the weeks and months ahead. The LCCA newsletter volunteer staff is most grateful to each advertiser for generously supporting us during difficult times.


- ABBEY PUB & RESTAURANT
- ALL JOBS SMALL (JEFF RICHARDS)
- AVE MARIA/OUR LADY OF THE MEADOWS
- EVERY'S SNOWPLOWING & LAWCARE
- BARN OWL BISTRO
- BATES FARM & HOME
- BERTRAND ELECTRIC
- BEST CHOICE PEST CONTROL
- BOAT HEADQUARTERS
- BOSTON POST DAIRY
- CHAMPLAIN CHEVROLET, INC.
- CHAMPLAIN VALLEY EQUIPMENT
- CLARITY REALTY, DIANNA BENOIT KITTELL
- COMMUNITY NATIONAL BANK
- ENOSBURG FALLS COUNTRY CLUB
- FLOWERS BY DEBBIE/JENNY'S BARN
- FRANKLIN TELEPHONE COMPANY
- GARCIA'S BISTRO
- GREAT OUTDOORS
- GREEN'S ACE HARDWARE
- HULL'S INSURANCE AGENCY, INC.
- MARK LARIVÉE
- MULLEN INSURANCE
- NOTCH
- ON A LIMB TREE SERVICE
- PAM DEUSO – TUPPERWARE
- PHOENIX HOUSE 1835
- QUINCY HOTEL OF ENOSBURG
- RICHFORD COUNTRY CLUB
- VERMONT MAPLE GIFT SHOPPE
- WOOD MEADOW MARKET
- WORKING DOG SEPTIC



FARM, HOME & GARDEN

Mon-Fri 7am-6pm
 Saturday 8am-4pm
 Sunday 9am-1pm
 (Seasonal Sunday hours from April 3rd until June 26th)

Weekly Delivery Schedule:



Free delivery; no minimum.

Follow us on Facebook!

Weekly Dinner Specials
Hand Crafted Cocktails



Open Wednesday-Friday at 3pm
 Saturday 11am-9pm. Sunday 11am-8pm

A father and son owned family restaurant **THE PHOENIX HOUSE**
 Dennis & Tyler Sheridan

Check out what's happening this week at www.facebook.com/phoenixhouse1835/

933-8400
 7 Potato Hill Rd W. Berkshire

Richford Country Club



Challenging Nine Hole Course

249 Golf Course Road

Richford VT, 05476

Call: 802-848-3527

Come Out and Play!

\$5.00 off regular priced green fees
with this ad



Corey Bertrand
Electrical Contractor
Master Electrician

580 St. Albans Road
Swanton, Vermont 05488
contact@BertrandElectricVT.com
www.BertrandElectricVT.com

Main: 802-528-5289
Cell: 802-782-3502
Fax: 802-528-5360

RESIDENTIAL • COMMERCIAL • INDUSTRIAL



**BECOME
A MEMBER
OF THE
LAKE
CARMİ
CAMPERS
ASSOCIATION**

NAME: _____

Renewal New Gift Membership

Attached is my check for 2022 dues, in the amount of \$50, made payable to **LCCA, Inc.**

Cottage 911 Mailing Address, if applicable: _____

Summer Mailing Address: _____

Winter (Off-season) Address: _____

Cottage Telephone: _____

Off-Season Telephone: _____

Email address: _____

You'll get the season's LCCA Newsletters (May-Sept.) by email, as well as other useful info, with no spam or advertising.

LCCA members are committed to Lake Carmi. Some volunteer to help out; some enjoy a week or more in our pristine setting. Please become a member and do what you can. Become an official LCCA member by sending your membership form and annual dues check today. If your information hasn't changed in the past year, just send your dues check. Comments are always welcome. Thanks!

I would like to contribute to the LCCA Water Quality Fund:
\$ _____

I would like to contribute to the Lake Carmi Community Foundation
\$ _____

Franklin History Corner**Carmi Lathrop Marsh: Farmer, Soldier, Businessman, Philanthropist****By Dave Bennion**

Carmi Marsh was born in Enosburgh, VT, on Aug. 4, 1842, to Lathrop L. Marsh and Lucy Chadwick Marsh. He grew up on the Marsh Pond Farm, located on the southeast side of Franklin Pond. That area is now Lake Carmi State Park.

On Sept. 11, 1862, Carmi and some of his friends went to Swanton to enlist in Company K of the 13th Vermont Infantry. At this first meeting, Carmi was elected 2nd Lieutenant, and Stephen Brown of Swanton was elected 1st Lieutenant.

Lt. Marsh went to Montpelier to participate in the election of Field Officers, and then went with Company K to Brattleboro to escort the 12th Vermont Regiment to Washington, DC. On Dec. 12, Company K arrived at camp in Fairfax Court House, VA. The cold, damp weather and muddy conditions caused many of the Company to become ill, including Marsh. About Dec. 27, he was diagnosed with typhoid pneumonia and hospitalized. Two days later, the doctor listed him as having cerebra-spinal meningitis.

On Feb. 5, his parents arrived, having been contacted about his serious illness, and found that he had been taken to the home of a Southern widow who had offered to nurse him back to health. This woman, Mary Dye Willcoxon, although a Confederate sympathizer, nursed him back to health until he was able to return to the family farm in Vermont, although it was months before he was able function as before. After returning home, it was years before Carmi

would once again see this generous woman.

Back in Vermont, Carmi continued to operate the family farm, eventually acquiring two more farms. He also became business partners with Olin Merrill and Moses P. Perley in operating the Kendall Spavin Cure business, then located at Enosburg Falls. Carmi furnished the necessary capital and push to make the Kendall Spavin Cure a growing and prosperous business.

Being in Washington, D.C., in 1898, it occurred to Marsh that he would like to see Mrs. Willcoxon again. With this objective in view, he went to Virginia and made many inquiries. He spent several days searching, only to learn that this Mrs. Willcoxon had married a man named Selecman and moved further south. It was understood that she was living in the vicinity of Manassas, VA., and again a widow.

Carmi located her, finding her in need. He gave her a “sum of money,” and from then on made an annual visit to see her, even sometimes taking his wife, daughter and grand-daughter to see her. He also never failed to send her a check quarterly. Upon hearing in 1902 that Mary was very ill, he went to her and was with her when she died. Before returning to Vermont, he paid her medical bills and funeral expenses.

On Sept. 8, 1910, Carmi Marsh, to pay tribute to his comrades, presented to the Town of Franklin a monument “to those who gave their lives” and “to those who dared to die but lived”. The 18-foot-high monument is in Marsh



Park (the Franklin Town Green). In that same year, Franklin Pond, also known as Silver Lake, was renamed Lake Carmi by the Vermont Legislature.

Want to join the Franklin Historical Society? Email us at historical@franklinvt.net.

Not from the Franklin area but still interested in Franklin history? We can add you to our Friends of Franklin Historical Society email list. Just email us at historical@franklinvt.net.

A History of Franklin, 1789-1989 is available for sale for \$20 at the Haston Library or the Franklin Town Clerk.

Check out our website at www.franklinvthistorical.com.



From top: 2nd Lt. Carmi Marsh; Mary Dye Willcoxon; the house near Wolf Run Shoales, VA., in which the ill 2nd Lt. Carmi Marsh spent the winter of 1863.

Background: The monument donated to Franklin in 1910.

(Bottom photograph courtesy Gratia Stanley. Background photograph by Ethan Dezotelle.)

FOGGY MORNING



A solitary fisherman waits for a bite on a cool, foggy, early-September morning that reminds everyone that autumn isn't too far off.
 Photograph by Alison Dezotelle

FRANKLIN COUNTY SEPT/OCT 2022 CALENDAR OF EVENTS

FRIDAY, SEPT. 16
David Miller
 The Abbey Pub, Sheldon.

SATURDAY, SEPT. 17
Golden Beats
 10 a.m., Franklin Town Hall. Fundamentals of Drums Alive Golden Beats fitness & drumming program. Free. Register: (802) 309-5197.

Using Power to Empower
 2 p.m., Cold Hollow Sculpture Park, 4280 Boston Post Rd., Enosburgh. Creating community-focused, renewable systems across divergent cultures. Free. RSVP: coldhollow-sculpturepark.com.

Summer Mash-Up Festival
 4:30 p.m., Fairfax Community Rec Park.

Music, food, local vendors. fairfaxrecreation.com.

FRIDAY, SEPT. 23
Chris & Erica
 The Abbey Pub, Sheldon.

SATURDAY, SEPT. 24
Enosburg Harvest Festival
 9 a.m.-4 p.m., Lincoln Park, Enosburg Falls. Live music, food, vendors.

Child Car Seat & Safety Check
 9 a.m.-noon, Highgate Fire Dept., Highgate Ctr. Free.

Drums Alive
 9 a.m., Franklin Town Hall. Fundamentals of DrumsAlive fitness & drumming program. Free. Register: (802) 309-5197.

FRIDAY, SEPT. 30
Phil Graziano
 The Abbey Pub, Sheldon.

SATURDAY, OCT. 8
Science in Words & Pictures
 2 p.m., Cold Hollow Sculpture Park, 4280 Boston Post Rd., Enosburgh. Communicating complex ideas with humor & animation. Free. RSVP: coldhollowsculpture-park.com.

ONGOING
Cold Hollow Sculpture Park
 Thursday-Sunday + holidays, noon-6, 4280 Boston Post Rd., Enosburgh. coldhollow-sculpturepark.com.

Live at McLurg's
 Fridays & Saturdays, 7 p.m., McLurg's Scottish Pub, 303 Main St., Enosburg Falls.

St. Albans Bay Farmers Market
 Thursdays, 4:30-7:30 p.m., St. Albans Bay Town Park, St. Albans Bay.

Richford Farmers Market
 Saturdays, 9 a.m.-1 p.m., 21 Main St., Richford

Montgomery Farmers Market
 Saturdays, 9 a.m.-noon, Pratt Hall, Montgomery.

Northwest Farmers Market
 Saturdays, 9 a.m.-2 p.m., Taylor Park, St. Albans City.



NORTHERN TIER CENTER FOR HEALTH
 FEDERALLY QUALIFIED HEALTH CENTER

www.notchvt.org

Enosburg Health Center Providers



Karen Towle, APRN Kristen Heller, MSW Lynn McMorow, APRN Sharon Stoll, MD Jonathan Speer, MPAS

Enosburg Health Center • 382 Main St., Enosburg Falls, VT 05450 • (802) 933-5831

Alburg Health Center
 Industrial Park Road
 Alburgh, VT 05440
 (802) 796-4414

Georgia Health Center
 4178 Highbridge Rd.
 Fairfax, VT 05454
 (802) 528-2600

Richford Dental Clinic
 44 Main St., Suite 400
 Richford, VT 05476
 (802) 255-5520

St. Albans Pharmacy
 3 Crest Rd.
 St. Albans, VT 05488
 (802) 527-6700

Fairfax Health Center
 1199 Main St.
 Fairfax, VT 05454
 (802) 849-2844

NOTCH Pharmacy
 44 Main St., Suite 201
 Richford, VT 05476
 (802) 255-5530

Richford Health Center
 44 Main St., Suite 200
 Richford, VT 05476
 (802) 255-5500

Swanton Health & Dental
 26 Canada St.
 Swanton, VT 05488
 (802) 868-2454

Fairfax Pharmacy
 997 Main St.
 Fairfax, VT 05454
 (802) 849-2101

NOTCH Primary Care
 12 Crest Rd.
 St. Albans, VT 05478
 (802) 524-4554

St. Albans Health Center
 3 Crest Rd.
 St. Albans, VT 05478
 (802) 524-4554

Swanton Rexall
 13 York St.
 Swanton, VT 05488
 (802) 868-3338

LCCF Golf Tournament a BIG Success

Well, it's in the bag!

The first annual Lake Carmi Community Foundation Golf Tournament went off without a hitch. Mother Nature cooperated with ideal weather conditions. The course cooperated in many ways, but especially by allowing one player a hole-in-one on the fifteenth hole. And the club's restaurant provided plenty of quality food and the beer cart was busy throughout the event.

Although the final numbers aren't in yet, it appears the Lake Carmi Community Foundation, Inc. will receive a big boost in its funding as it works to address issues around the lake.


For those unaware of the LCCF, it was created in August 2016. The goals of the Foundation are as follows:

"The corporation is organized, and shall be operated, primarily for the purpose of conserving Lake Carmi as a resource for all people in the State of Vermont. This corporation is organized, and is to be operated, exclusively for charitable and


educational purposes within the meaning of Section 501(c)(3) of the United States Internal Revenue Code of 1986, as amended (the "Code") (or the corresponding provision of any

future federal tax code), and any other lawful purpose permitted to an entity referred to in Section 501(c)(3) of the

See GOLF, pg. 15



Franklin Telephone Company, Inc
 PO Box 96
 5217 Main St
 Franklin
 285-9911
 High Speed Internet
 "Local" & Long Distance Telephone Service

Wood Meadow Market
 An Organic & Natural Habitat
 Owners: Patrick & Kirsten Hayes
Wood Meadow Market
 Organic, Natural & Gluten Free
 342 Main Street
 Enosburg Falls, VT 05450
 802-933-2256
 pkhayes80@yahoo.com

Vermont's Community Bank

49 Sampsonville Road, Enosburg Falls • 802-933-8500 • Monday - Friday 8:00 a.m. - 5:00 p.m.

- SERVICES:**
- 24-Hour ATM
 - Drive-Up ATM
 - Drive-Up Window
 - Night Deposit
 - Safe Deposit Box
 - Notary
 - Mobile Wallet



Community National Bank

Equal Housing Lender  Member FDIC

Vermont's Community Bank

To learn about all of our services, please visit communitynationalbank.com



communitynationalbank.com





MULLEN INSURANCE

Mullen Insurance is licensed in 9 states & represents more than 25 national & regional companies

We are an industry leader representing

5 of the **10** largest commercial insurance writers in the US

#1 insurer of farms nationally

Offering multiple **A+** rated insurers

#1 Insurer of fire sprinkler contractors in Vermont

#1 Insurer of fuel oil & propane dealers in VT



140 South Main St., Suite 2 St. Albans, VT 05478 802-527-0121

Code (or the corresponding provision of any future federal tax code).”

We all have a stake, as well as significant investments, in the lake. The LCCF, along with the Lake Carmi

One Happy Lake

Camper’s Association, the Franklin Watershed Committee, the Town of Franklin, and the state of Vermont are working diligently to improve and protect this wonderful natural resource.

The LCCF is looking for volunteers to serve on its Board of Directors.

Please consider playing a role in the future of our little piece of paradise.

The golf committee did an amazing job on this first attempt. There were some glitches here and there, but they will be addressed for future events.

We would like to personally thank the Enosburg Falls Country Club, the restaurant staff who kept the food and beverages coming, our sponsors, those who provided items for our



silent auction and the gifts for the winners of our contests. Please be sure to visit our sponsors when looking for services they provide.

Lastly, we would like to thank the volunteers who helped put this event together, and the golfers who took time from their busy schedules to join us in making our first attempt a success This was truly a team effort.

Hope to see you around the lake.

Left: Todd Forsyth celebrates getting the day's only hole-in-one at the Enosburg Falls Country Club's 15th hole. Above: A team of happy golfers enjoys the day.



The Lake Carmi Community Foundation would like to thank the following for helping to make our golf tournament an over-whelming success.

Sponsors

- Mullen Insurance Agency
- Wright's Excavating, Inc.
- Handy Toyota
- The Abbey
- Jolley Associates
- Champlain Valley Equipment
- Mylan Technologies, a Viatrix Co.
- R. L. Vallee, Inc.
- Community National Bank
- Sticks & Stuff
- Union Bank
- Vaughn Comeau, Probate Judge
- Tamithy Howrigan Real Estate
- Belisle & Vians
- Peoples Trust Company
- Ava Maria/Our Lady of the Meadows
- Harrison Concrete
- Timothy G. Hurlbut, Esquire

Silent Auction Donations

- Amy Snow
- Body Lounge
- Brandi Shilling
- Breezy Acres
- Champlain Country Club
- Dock Boys
- Vermont River Table-Chris Parent
- Franklin Maple Producers
- Collins Perley Sports & Fitness Center
- Eric Tobin
- Flower by Debbie
- Green Country Corners
- Susan Prasch
- Vaughn Comeau, Esquire
- Vermont Maple Gifts
- Pam Deuso
- Jay Peak Golf
- Boat Headquarters
- McCuins
- Working Dog Septic
- Body Lounge
- Village Frame Shoppe & Gallery
- Due North Vineyards
- Dukes
- American Walls & Pavers
- Shannon Kane
- Franklin General Store
- Coca Cola
- Deuso Family Maples
- Fisher House Greenhouse

In Kind Donations

- Hull Insurance Agency
- Enosburg Falls Country Club
- Richford Country Club
- Bakersfield Country Club
- Williston Golf Club
- Neshobe Golf Club
- Links at Lang Farm
- Orleans Country Club
- Coca Cola
- Hannaford
- Freihofer
- Richard A. Gadbois, Esq.
- Sartwell Family Maples
- Grizzly Graphics
- Boston Post Dairy
- Plate 108
- Rocky Ridge Golf Club

Volunteers

- Lorraine Mercy
- Les Johnson
- Ellen Read
- Suzi Hull Casavant
- Carol Costa
- David Larose
- Jan Gill
- Chris Gill
- Ruth Ann Krayesky
- Sue Ewins

LAKE CARMİ ASSOCIATION NEWS

Lake Carmi Association News is published monthly from May through September by the Lake Carmi Campers Association. Lake Carmi Association is available in print and online at lakecarmivt.com.

Editors: Peter Benevento, Polly Gadbois, Suzanne Hull-Casavant, Rhonda Somers-Fletcher, Ethan Dezotelle, Alison Dezotelle

Ad Sales: Polly Gadbois

Design & Production: Ethan Dezotelle

Submissions to Lake Carmi Association news are always welcome at editors@lakecarmivt.com.

Lake Carmi Campers Association Mission Statement

The Lake Carmi Campers Association, Inc., is dedicated to conserving our unique natural resources, improving and enhancing the quality of life and the environment, for all Lake Carmi residents and visitors. In cooperation with local and state authorities, the association shall provide educational, cultural, and recreational activities, as well as water quality management and safety education initiatives. Further, the association will provide a medium through which information and educational programs and materials may be distributed throughout the community.



APPEAL from pg. 7

agricultural community as they work to implement Best Management Practices.

As many of you know, Lake Carmi has drawn significant attention from local and regional media outlets, and we recently hosted members of our Congressional delegation at the lake who wanted to learn more about our concerns. We feel strongly that with every challenge comes an opportunity. We have an amazing collaboration of campers, farmers, community members, local and state elected officials and state clean water partners who are all trying to do their best to improve our situation. We have a unique opportunity to demonstrate for all Vermonters, what can be done if we all work together.

While our work is far from over, we do want to thank all of our partners who have been with us throughout this journey. While we may not always agree, we very much appreciate their insights and partnerships with this important work. In a period where the state has unprecedented resources from COVID-related federal grants and tax revenue, it seems a good use of those funds to try to take a significant step forward to address the state's only lake in crisis, as well as continue to learn more about what type of lake treatment would be the most effective for Lake Carmi.

Rob Evans
Franklin Watershed Committee President
LCCA Vice President



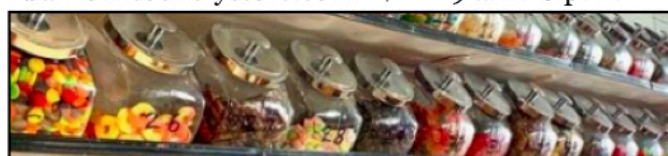
VT & USA-made ...

- | | | |
|----------------|------------|-----------------|
| Housewares | Crafts | Art |
| Games | Stickers | Game |
| Greeting Cards | Jewelry | Nights |
| Books | Notebooks | |
| Decor | Puzzles | <i>Delivery</i> |
| | Fashion | <i>within 9</i> |
| | Gift Cards | <i>miles</i> |

All in an 1870s store brought back to life

268 Montgomery Rd.
East Berkshire, Vt 05447
barnowlbistrovt@gmail.com
barnowlcountrystore.com

Monday-Friday
8 a.m.-8 p.m.
Saturday-Sunday
9 a.m.-8 p.m.





Boston Post Dairy, LLC
Vermont Farmstead Cheese

Top of the Hill Maple Products
Back to Nature Goat Milk Soap

Bob, Gisele, Anne,
Theresa & Susan
2061 Sampsonville Road
Enosburg Falls, VT 05450

Phone 802-933-2749
Fax 802-933-8334
www.bostonpostdairy.com
bostonpost@bpd.comcastbiz.net

BOAT Headquarters

"Worth the Drive"

BOATS:
Four Winns
Sylvan
SunChaser
Smokercraft
Starcraft
Starweld
South Bay
War Eagle

MOTORS:
Mercuriser
Volvo Penta
Mercury
Evinrude
Yamaha
DOCKS & LIFTS:
Floe
Bertrand

KEVIN LOTHIAN
Sales



Rte. 78 • Swanton, VT 05488
T: 802-868-4444 • F: 802-868-7190
E: boatheadquarters@myfairpoint.net
W: www.boatheadquarters.com

All Jobs Small

Carpenter/Handyman

Jeffry Richards
Lake Carmi, Franklin VT 05457

alljobssmall@hotmail.com
802-272-3054



Ave Maria
Community Care Homes, Inc.™
Dedicated to Caring

Exceptional Elder Care for over 29 Years
Level III Senior Living and Memory Care
Our Lady of the Meadows & Ave Maria
Richford, VT~802-848-7106
www.avemariacare.com



Dianna Benoit Kittell

Broker, Realtor, ABR, SRES

802.782.4342

Email: diannabenoitvt@kw.com

Visit: diannabenoitvt.kw.com



Clarity Real Estate

186 Main St. PO. Box 17
Enosburg Falls VT, 05450



HULL
INSURANCE
AGENCY

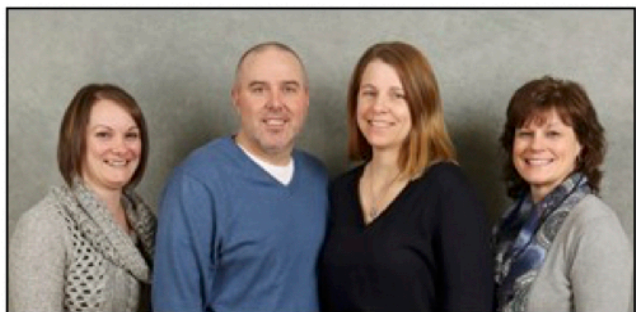
An Independent Agency
Auto – Home – Watercraft – Recreational
Farm – Business –
Workers Compensation

802-933-4359 info@hullinsure.com

www.hullinsure.com

37 Pearl Street, Enosburg Falls, VT

**Local agents with a Vermont
product supporting our
communities, local businesses
and farmers.**



TAKE THE DRIVE ON 105 FOR YOUR NEXT VEHICLE



Get \$25 Off
in Our Service
Department When
You Mention
This Ad

Come On In
for Your
Alignments

Extreme
Undercoating
Services

Full
Maintenance
on Most Makes
and Models

Full Vehicle
Detail
Department



Scan Here To Message Us
On Facebook Messenger

Contact Us

57 Missisquoi St, Enosburg Falls, VT 05450

www.champlainchevy.com

802.933.4455

Take The Drive On 105



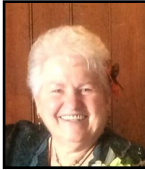
CLASSIFIEDS

Members of the LCCA who are current with their dues are permitted a free classified ad in all five issues of our newsletter. Merchandise ads are only run for two issues, unless renewed. Camp rentals can run for the entire season, but if you have no more availability, please notify the editor.

- COTTAGE FOR RENT:** Mullen Shore; May thru Oct – Call (802) 373-1173 for details.
- COTTAGE FOR RENT:** Hammond Shore Rd, fully furnished, bring your own linens. (802) 285-6737.
- COTTAGE FOR RENT:** Dewing Shore, 3 bedrooms, large yard, high-speed fiber internet. Call or text (802) 289-3286.
- MAPLE SYRUP** (all sizes), Raw Honey, Apples and Apple Cider (during season), Call Charlie Magnant: 285-2290.
- FOR SALE:** Vermont Castings Resolute woodstove. Measures 26"x26"x26". Clean. New glass in doors. Some accessories included. Heats a 20 x 20' room. \$500 or best offer. (802) 285-6464.
- FOR SALE:** Stowe Company Mansfield 13' Explorer canoe, used., \$250. Also mooring buoy, diameter 12", \$50 OBO. Ernie Englehardt: (802) 223-5529.
- DON'T FORGET** to get your winter supply of syrup and BBQ sauce when closing up your camp. BBQ Sauce: \$8/bottle; Syrup: 1/2 gallon \$22. Call Howard or Pam Deuso: (802) 285-2031.



In Memoriam



Fredda Ploof (Jan. 20, 1944-Aug. 10, 2022)
Fredda Ploof, 78, of Hammond Shore Rd., passed away on Wednesday, Aug. 10, 2022.
For a full obituary, please visit goosfs.com/obituaries/fredda-ploof.



Richard E. Boudreau (March 27, 1941-Aug. 11, 2022)
Richard E. Boudreau, 81, of Franklin, passed away on Thursday, Aug. 11, 2022.
For a full obituary, please visit gossfs.com/obituaries/richard-boudreau.



The Great Outdoors

Nathan & Avril Cochran, Proprietors

117 Waterfront Plaza,
Newport, VT 05855
P | 802-334-2831 F | 802-334-5877

65 North Gate Plaza
Morrisville, VT 05661
P | 802-888-3718

162 Main Marketplace
Enosburg Falls, VT 05450
P | 802-933-4815

www.GreatOutdoorsVermont.com

Enjoy a great game of golf at Enosburg Falls Country Club 802-933-2296

53 Elm St.
Enosburg Falls, Vt
EFCCVT.com

ethandezotelle.com

A Franklin resident in pursuit of the writer's life, sharing thoughts on family, writing, culture, life in Vermont, and Ziti the dog.

Any goofball can have a website these days ...

MOONLIGHT IN FRANKLIN



A bright, waxing gibbous moon hangs over Lake Carmi shortly after Labor Day weekend. Photograph by Ellen Richards

Summer's End, and Not a Moment too Soon

I just got back in from walking my dog around Franklin village. It's a little before 9 p.m., and the air is filled with the sounds of late summer: the chirps and buzzes of insects, the distant rumble of ATVs, the giggle of kids still outside playing after dark.

Something else hangs in the air. It's the first scent of autumnal decay. The leaves that adorn maples, birches, and beeches are tired, and soon they'll change color, drop, and rot. It's already begun on a few trees, and that smell carries on the evening breeze.

For all intents and purposes, summer is over. As Oscar Wilde once observed, "... all at once, summer collapsed into fall." It happens quick.

Summer in Franklin is something special. If you're reading this, odds are I don't need to tell you. You already know. But it bears repeating.

Special things never last, though, and this year, that's for the best. Franklin's watery heart – Lake Carmi – could do with some rest from the heat. It was a hard summer.

I'm not going to rehash everything you've already read in this issue about the struggles the

lake and its supporters have faced over the past few months. We're all intimately familiar with the condition of the lake and the symptoms of its illness.

Instead, as we cap off another season at Lake Carmi, I'm challenging readers to do something. Especially those who complain loudly and consistently about water quality, but do little else.

Get in touch with those who possess the authority to make big decisions and spend big money. One email to several people can make a tremendous difference.

It sounds naive and a bit cliché, but it's true. I was told many times as a newspaper editor that if an elected official gets a dozen emails, letters, and phone calls about an issue, that's enough to set off alarm bells. So let's ring some bells.

To make things easier, I'm including contact info here for a few of the folks worth sharing our concerns with. I'd share more if I had the space.

Vermont's Federal Delegation

- Sen. Bernie Sanders: (800) 339-9834, sanders.senate.gov/contact/contact-form/
- Sen. Patrick Leahy: (800) 642-3193, leahy.senate.gov/contact

- Rep. Peter Welch: (888) 605-7270, welch.house.gov/contact

Franklin County Reps

- Sen. Randy Brock: (802) 868-2300, rbrock@leg.state.vt.us
- Sen. Corey Parent: (802) 370-0494, cparent@leg.state.vt.us
- Rep. Lisa Hango: (802) 828-2228, lhango@leg.state.vt.us
- Rep. Wayne Laroche: (802) 828-2228, wlaroche@leg.state.vt.us
- All other Franklin County reps can be found at legislature.vermont.gov/people/search/2022.

Legislative Committees

- VT Senate Committee on Natural Resources & Energy: legislature.vermont.gov/committee/detail/2022/30
- VT House Committee on Natural Resources, Fish & Wildlife: legislature.vermont.gov/committee/detail/2022/12

VT Agency of Natural Resources

- Sec. Julie Moore: (802) 828-1294, julie.moore@vermont.gov

Keep in mind that many of these folks are up for re-election this fall. It's a great time to have their ear. And if they don't get re-elected, get the ears of those who take their place.

The time to act is now. Otherwise, I fear the day will come when, while walking my dog on a mid-September evening, the only smell in the air will be that of a dying lake.